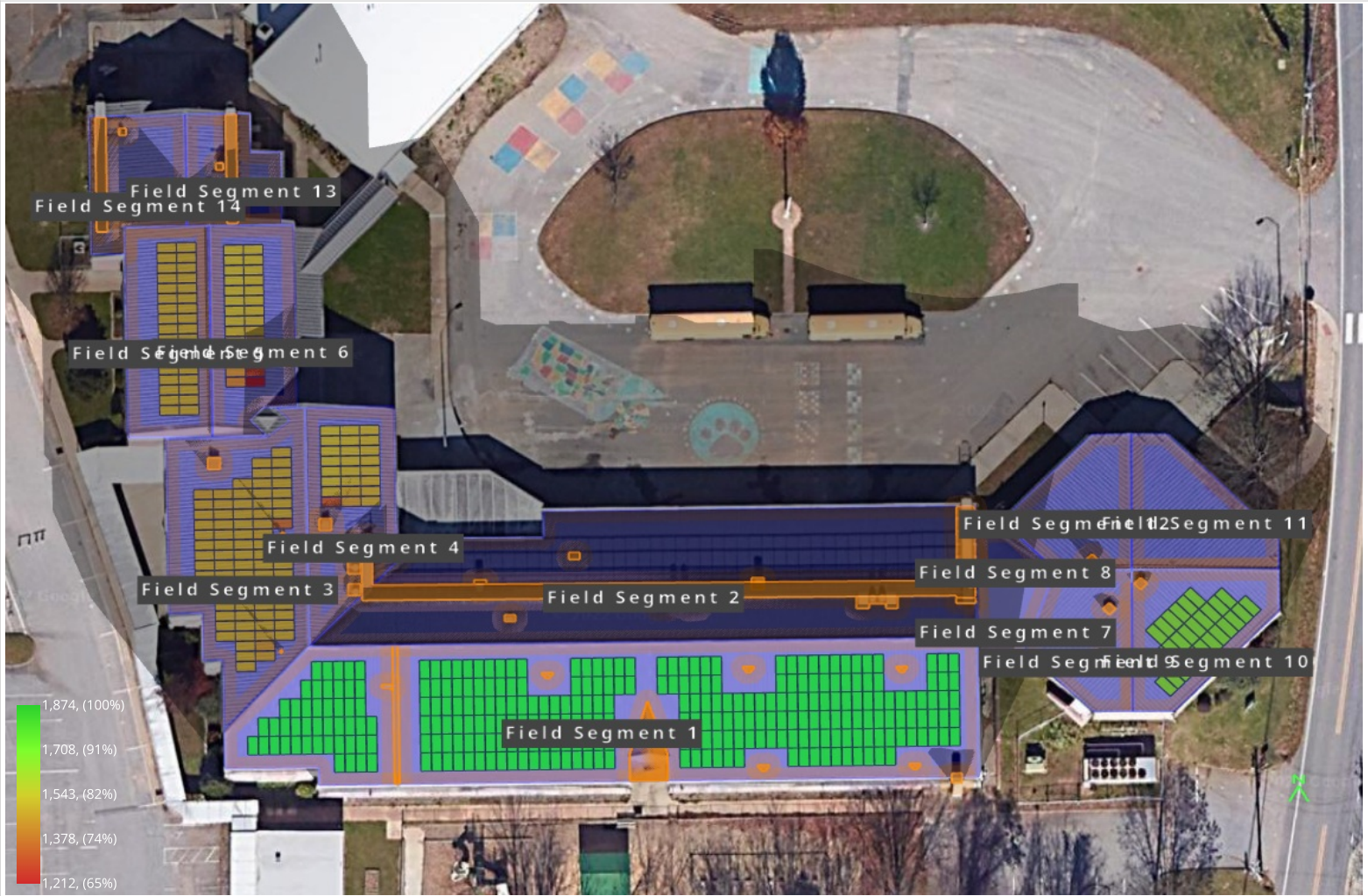


Meter #324748008 BCS - Emma Elementary - 37 Brickyard Rd, 37 Brickyard Rd, Asheville NC 28806

Shading Heatmap



Shading by Field Segment

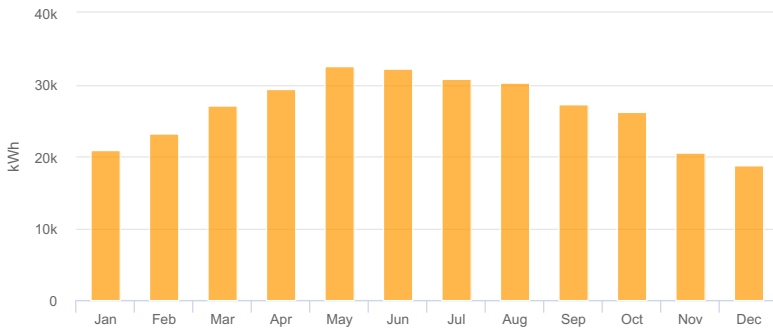
Description	Tilt	Azimuth	Modules	Nameplate	Shaded Irradiance	AC Energy	TOF ²	Solar Access	Avg TSRF ²
Field Segment 1	30.0°	179.2°	282	135.4 kWp	1,890.3kWh/m ²	204.2 MWh ¹	100.0%	100.0%	100.9%
Field Segment 3	30.0°	269.0°	83	39.8 kWp	1,476.7kWh/m ²	47.5 MWh ¹	79.1%	99.7%	78.8%
Field Segment 4	30.0°	89.0°	24	11.5 kWp	1,487.7kWh/m ²	13.9 MWh ¹	80.8%	98.3%	79.4%
Field Segment 5	30.0°	269.0°	34	16.3 kWp	1,481.2kWh/m ²	19.5 MWh ¹	79.1%	100.0%	79.1%
Field Segment 6	30.0°	89.0°	28	13.4 kWp	1,462.1kWh/m ²	16.0 MWh ¹	80.8%	96.6%	78.0%
Field Segment 10	8.0°	134.6°	28	13.4 kWp	1,699.0kWh/m ²	18.4 MWh ¹	91.3%	99.3%	90.7%
Totals, weighted by kWp			479	229.9 kWp	1,733.2kWh/m²	319.5 MWh	92.8%	99.7%	92.5%

¹ approximate, varies based on inverter performance
² based on location Optimal POA Irradiance of 1,873.6kWh/m² at 33.9° tilt and 181.3° azimuth

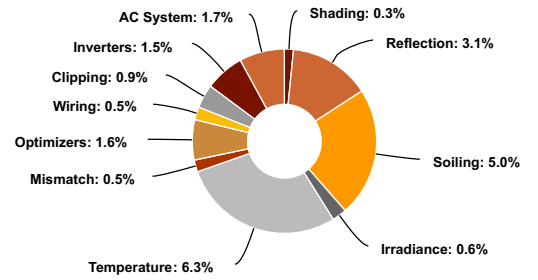
Solar Access by Month

Description	jan	feb	mar	apr	may	jun	jul	aug	sep	oct	nov	dec
Field Segment 1	100%	100%	100%	100%	100%	100%	100%	100%	100%	100%	100%	100%
Field Segment 3	99%	100%	100%	100%	100%	100%	100%	100%	100%	100%	99%	99%
Field Segment 4	96%	97%	99%	99%	99%	99%	99%	99%	99%	98%	95%	94%
Field Segment 5	100%	100%	100%	100%	100%	100%	100%	100%	100%	100%	100%	100%
Field Segment 6	89%	94%	97%	99%	98%	99%	98%	98%	98%	96%	92%	87%
Field Segment 10	100%	100%	99%	99%	99%	100%	99%	99%	99%	99%	99%	99%
Solar Access, weighted by kWp	99.3%	99.5%	99.7%	99.8%	99.8%	99.8%	99.8%	99.8%	99.8%	99.7%	99.4%	99.2%
AC Power (kWh)	20,968.4	23,144.6	27,041.2	29,461.7	32,636.9	32,236.8	30,779.4	30,294.7	27,236.8	26,233.3	20,614.0	18,845.4

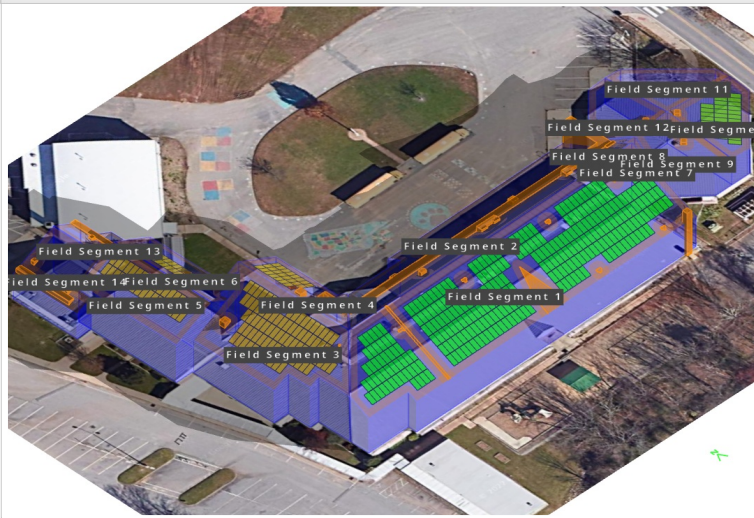
Monthly Production



Sources of System Loss



Southwestern Angle



Southeastern Angle

